

# VERMONT COMMUNITY PROFILE: **SPRINGFIELD**

- Located in Windsor County
- Population: 9,374
- 30 minutes to Okemo Mountain Resort
- 40 minutes to Dartmouth College
- 2.5 hours via interstate to Boston, MA
- Chosen from 13 other cities to host the premiere of The Simpsons Movie in 2007



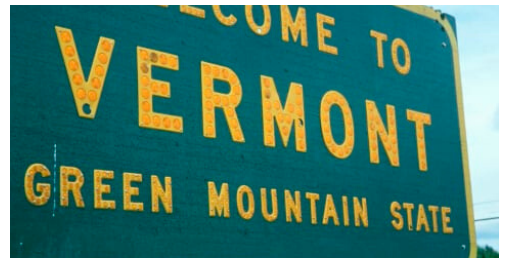
**f TOWN OF SPRINGFIELD, VERMONT**



**Health & Community**



**Schools & Education**



**Relocate to Vermont**



**Recreation & Culture**



**Getting Around Town**



**Community Groups**



**Employers & Business**



**Search for Local Jobs**



**Local Resources**

**Looking for more information?  
Contact Kyle Thweatt at 802-123-4567**

# OVERVIEW OF HEALTH & COMMUNITY: **SPRINGFIELD**



## VERMONT AT A GLANCE



**#1**

*Healthiest  
State in the  
Country*

**#2**

*Safest State in  
the Country*

**#6**

*Overall Child  
Well-Being*



**Hospitals & Clinics**



**Doctors**



**Dentists**



**Veteran Services**



**Other Resources**



**Pet Care**

*Looking for more information?  
Contact Kyle Thweatt at 802-123-4567*

# OVERVIEW OF SCHOOLS & EDUCATION: **SPRINGFIELD**



## VERMONT AT A GLANCE

think! VT

**9.7**

*Students per teacher;  
Lowest ratio in the  
country*

**83%**

*School Districts with  
a Farm to School  
Program*

**#5**

*Ranking of Best  
Public Schools in  
the country*



**Local K-12 Schools**



**Pre-School & Childcare**



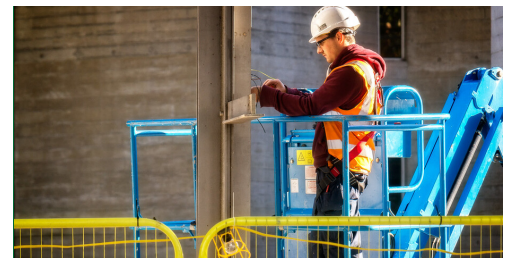
**After-School & Camps**



**Get Involved**



**Colleges & Universities**



**Post Secondary Options**

***Looking for more information?  
Contact Kyle Thweatt at 802-123-4567***

 **VERMONT**

**DEPARTMENT OF LABOR**

A proud partner of the americanjobcenter network

# OVERVIEW OF RELOCATING TO VERMONT: **SPRINGFIELD**



## VERMONT AT A GLANCE

think!VT

**#1**

*Safest State to Live  
in the Country*

**#3**

*Berst State to Live in  
the Country*

**#1**

*Best State to  
Have a Baby*



**Demographic Info**



**Chambers of Commerce**



**VT Welcome Wagon**



**Realtors**



**Housing**



**Utilities**

***Looking for more information?  
Contact Kyle Thweatt at 802-123-4567***

# OVERVIEW OF RECREATION & CULTURE: **SPRINGFIELD**



## VERMONT AT A GLANCE

think! VT

**#1**

*Ski State on  
the East Coast*

**1000**

*Miles of  
Hiking Trails*

**#1**

*State for  
Commitment to  
Local Food*



**Outdoor Recreation**



**Parks & Beaches**



**Local Highlights**



**Local Attractions**



**Youth Activities**



**Adult Activities**

*Looking for more information?  
Contact Kyle Thweatt at 802-123-4567*

# OVERVIEW OF GETTING AROUND TOWN: **SPRINGFIELD**



## VERMONT AT A GLANCE

think! VT

**321**

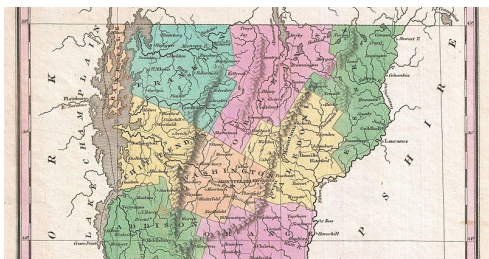
*Miles of Interstate Highway in Vermont*

**48**

*State and Municipal Park and Ride locations*

**230**

*Electric Vehicle Charging Stations in Vermont*



**Local Map**



**VTrans**



**Transit & Commuting**



**Other Transportation**



**Electric Vehicles**



**Local Projects**

***Looking for more information?  
Contact Kyle Thweatt at 802-123-4567***

# OVERVIEW OF COMMUNITY GROUPS: **SPRINGFIELD**



## VERMONT AT A GLANCE

think! VT

**251**

*Communities  
across Vermont*

**700**

*Members of Vermont  
Businesses For Social  
Responsibility*

**#4**

*Best State for  
Work-Life Balance*



**Business & Networking**



**Faith-Based Groups**



**Civic Engagement**



**Non-Profit**



**Political**



**Other Groups**

***Looking for more information?  
Contact Kyle Thweatt at 802-123-4567***

 **VERMONT**

**DEPARTMENT OF LABOR**

A proud partner of the americanjobcenter network

# OVERVIEW OF EMPLOYERS & BUSINESSES: **SPRINGFIELD**



## VERMONT AT A GLANCE

think!VT

**#4**

State for Working Parents

**#4**

Best State for Work-Life Balance

**#1**

In Patents Filed Per Capita

**VERMONT  
JOBS**

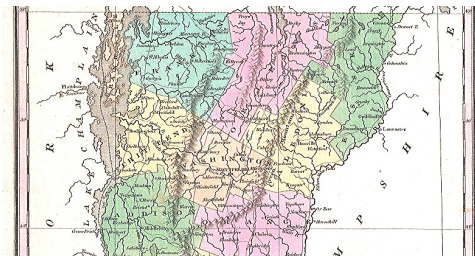
Find a Job in Vermont

think!VT  
ThinkVermont.com

Key Industries



New Worker Grant



Employers by Region



Springfield



Triple Bottom Line

Looking for more information?  
Contact Kyle Thweatt at 802-123-4567

 **VERMONT**  
DEPARTMENT OF LABOR  
A proud partner of the [americanjobcenter](#) network