

FOR IMMEDIATE RELEASE
June 21, 2019

Contact:
Mathew Barewicz, E & LMI Chief
State of Vermont
Department of Labor
Mathew.Barewicz@vermont.gov
802-828-4153

Vermont’s Unemployment Rate Down Again

Today, the Vermont Department of Labor released data on the Vermont economy for the time period covering May 2019. According to household data, the seasonally-adjusted statewide unemployment rate for May was 2.1 percent. This reflects a decrease of one-tenth of one percentage point from the revised April rate. The current seasonally-adjusted estimate of the number of unemployed Vermonters (7,328) as well as the statewide seasonally-adjusted unemployment rate are both once again new lows since the U.S. Bureau of Labor Statistics online historical series started in 1976.

Commissioner’s Message

“A 2.1% unemployment rate means that approximately 7,300 Vermonters, who are actively looking for employment, do not currently have a job. Vermont employers report there is a wide variety of career opportunities for entry level and people with years of experience. There are over 8,500 job postings in Vermont Job Link alone. If you are looking for a job, we encourage you contact the Vermont Department of Labor at 828-4355. In addition to connecting job seekers with employers, our employment specialists offer extra assistance with resume writing, interview preparation, and information about training and apprenticeship opportunities,” said Labor Commissioner Lindsay Kurrle.

Chart 1. Unemployment Rate, seasonally adjusted

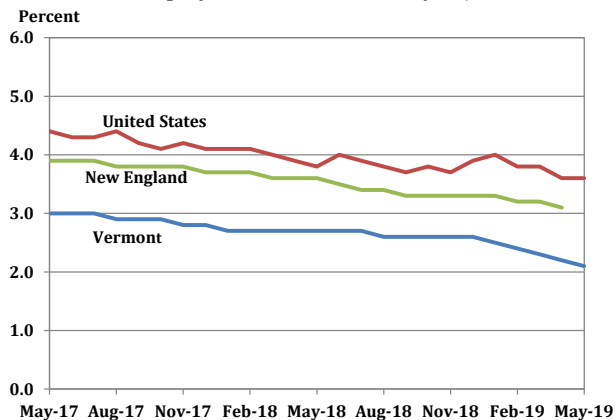
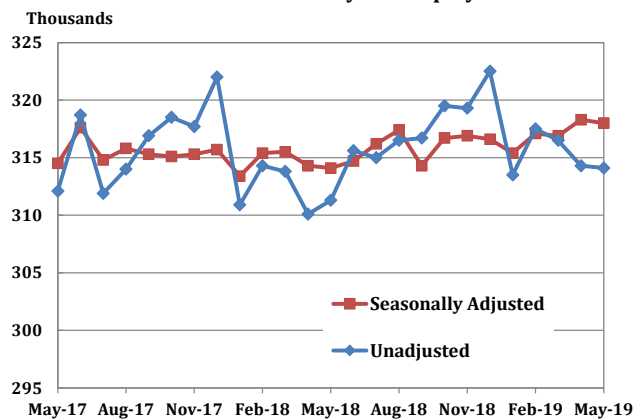


Chart 2. Vermont Nonfarm Payroll Employment



State of Vermont Overview

The Vermont seasonally-adjusted unemployment rate declined by one-tenth of one percentage point in May to a level of 2.1 percent. The comparable United States rate in May was 3.6 percent, which was unchanged from the revised April estimate. The seasonally-adjusted Vermont data for May show the Vermont civilian labor force increased by 675 from the prior month's revised estimate. The number of employed persons increased by 926 and the number of unemployed persons decreased by 251. The changes to the number of unemployed persons and the unemployment rate were statistically significant in the seasonally-adjusted series.

The May unemployment rates for Vermont's 17 labor market areas ranged from 1.5 percent in Burlington-South Burlington and White River Junction to 3.1 percent in Woodstock (note: local labor market area unemployment rates are not seasonally-adjusted). For comparison, the May unadjusted unemployment rate for Vermont was 1.9 percent which was a decrease of three-tenths of one percentage point from the revised unadjusted April level and a decrease of six-tenths of one percentage point from a year ago.

Analysis of Job Changes by Industry

Not-Seasonally-Adjusted

The preliminary 'not-seasonally-adjusted' jobs estimates for May show a decrease of 200 jobs when compared to the revised April numbers. There was a decrease of 100 jobs between the preliminary and the revised April estimates due to the inclusion of more data. The monthly decrease seen in the May numbers was primarily attributable to seasonal activity related to Leisure & Hospitality and State Government Education. The broader economic trends can be detected by focusing on the over-the-year changes in this data series. As detailed in the preliminary 'not-seasonally-adjusted' May data, Total Private industries have increased by 2,300 jobs (0.9 percent) and Government (including public education) employment has increased by 500 jobs (0.9 percent) in the past year.

Seasonally-Adjusted

The seasonally-adjusted data for May reports a decrease of 300 jobs from the revised April data. As with the 'not-seasonally-adjusted' data, this over-the-month change is from the revised April numbers which experienced a decrease of 100 jobs from the preliminary estimates. The seasonally-adjusted over-the-month changes in May varied at the sub-sector level. Those with a notable increase include: Mining & Logging (+100 jobs or +14.3%), Arts, Entertainment & Recreation (+200 jobs or +4.3%), and Real Estate, Rental & Leasing (+100 jobs or +3.4%). Sectors with a notable decrease include: Administrative & Waste Services (-500 jobs or -4.0%), Retail Trade (-500 jobs or -1.3%), and Transportation, Warehousing & Utilities (-100 jobs or -1.2%).

The Unemployment and Jobs Report for June is scheduled to be released on Friday, July 19, 2019 at 10:00 a.m.



Table 1. Vermont Labor Force Estimates, seasonally adjusted

	May 2019	April 2019	May 2018	Change From:	
				April 2019	May 2018
Civilian Labor Force	347,024	346,349	346,307	675	717
Employed	339,696	338,770	336,987	926	2,709
Unemployed	7,328	7,579	9,320	-251	-1,992
Unemployment Rate (%)	2.1	2.2	2.7	-0.1	-0.6

Vermont's labor force, employment and unemployment statistics are produced from a combination of a Statewide survey of households and statistical modeling. The data are produced by the Local Area Unemployment Statistics Program (LAUS), a cooperative program with the U.S. Department of Labor, Bureau of Labor Statistics (www.bls.gov/lau) and the Vermont Department of Labor (www.vtmi.info/labforce).

Table 2. Vermont Labor Market Areas, Labor Force Estimates

not seasonally adjusted

Labor Market Area ¹	Civilian Labor Force	May 2019		Unemployment Rate ² (%)		
		Employed	Unemployed	May-19	Apr-19	May-18
Vermont Total	346,777	340,213	6,564	1.9	2.2	2.5
Barre-Montpelier	26,381	25,939	442	1.7	2.4	2.3
Bennington	11,477	11,222	255	2.2	2.6	3.0
Brattleboro	21,408	20,938	470	2.2	2.3	3.0
Burlington-South Burlington	128,150	126,218	1,932	1.5	1.5	1.9
Derby	12,627	12,246	381	3.0	4.8	3.9
Highgate	10,386	10,191	195	1.9	2.5	2.3
Manchester	10,995	10,718	277	2.5	2.8	3.7
Middlebury	18,761	18,413	348	1.9	2.1	2.3
Morristown-Waterbury	17,530	17,114	416	2.4	3.4	3.2
Newbury	2,834	2,784	50	1.8	2.7	2.6
Northfield-Waitsfield	6,871	6,722	149	2.2	1.8	2.6
Randolph	7,297	7,145	152	2.1	2.8	2.8
Rutland	21,265	20,767	498	2.3	2.4	3.3
Springfield	10,383	10,149	234	2.3	2.3	3.0
St. Johnsbury	13,437	13,153	284	2.1	3.1	2.8
White River Junction	20,133	19,839	294	1.5	1.6	2.0
Woodstock	3,670	3,558	112	3.1	2.7	4.1

¹The area names above are common language titles; for official names of areas including encompassing cities and towns please refer to the Vermont Labor Market Area map (<http://www.vtmi.info/lmadef2015.pdf>).

²Rate is an estimate for number of unemployed divided by total labor force, expressed as a percent.

Source: Local Area Unemployment Statistics Program (LAUS) produced by the Vermont Department of Labor (www.vtmi.info/labforce.cfm) in cooperation with the U.S. Bureau of Labor Statistics (www.bls.gov/lau).



Table 3. Vermont Nonfarm Payroll Employment, seasonally adjusted (thousands)

NAICS Industry	May-19	Apr-19	May-18	Change From:		% Change From:	
	Prelim	Revised	Revised	Apr-19	May-18	Apr-19	May-18
Statewide, Total Nonfarm	318.0	318.3	314.1	-0.3	3.9	-0.1	1.2
Total Private	261.1	261.4	258.2	-0.3	2.9	-0.1	1.1
Mining, Logging and Construction	15.1	14.9	16.0	0.2	-0.9	1.3	-5.6
Mining & Logging	0.8	0.7	0.8	0.1	0.0	14.3	0.0
Construction	14.3	14.2	15.2	0.1	-0.9	0.7	-5.9
Manufacturing	30.8	30.9	29.8	-0.1	1.0	-0.3	3.4
Durable Goods	19.4	19.4	18.3	0.0	1.1	0.0	6.0
Non-Durable Goods	11.4	11.5	11.5	-0.1	-0.1	-0.9	-0.9
Trade, Transportation and Utilities	54.1	54.8	54.4	-0.7	-0.3	-1.3	-0.6
Wholesale Trade	9.0	9.1	9.1	-0.1	-0.1	-1.1	-1.1
Retail Trade	37.1	37.6	37.3	-0.5	-0.2	-1.3	-0.5
Trans., Warehousing & Utilities	8.0	8.1	8.0	-0.1	0.0	-1.2	0.0
Information	4.2	4.2	4.3	0.0	-0.1	0.0	-2.3
Financial Activities	11.7	11.5	12.0	0.2	-0.3	1.7	-2.5
Finance & Insurance	8.7	8.6	9.0	0.1	-0.3	1.2	-3.3
Real Estate, Rental & Leasing	3.0	2.9	3.0	0.1	0.0	3.4	0.0
Professional and Business Services	29.3	29.4	28.8	-0.1	0.5	-0.3	1.7
Professional & Technical Services	14.8	14.7	14.7	0.1	0.1	0.7	0.7
Administrative & Waste Services	12.1	12.6	12.2	-0.5	-0.1	-4.0	-0.8
Education and Health Services	67.0	67.1	65.8	-0.1	1.2	-0.1	1.8
Private Educational Services	13.4	13.3	13.5	0.1	-0.1	0.8	-0.7
Health Care & Social Assistance	53.6	53.8	52.3	-0.2	1.3	-0.4	2.5
Leisure and Hospitality	38.8	38.5	36.9	0.3	1.9	0.8	5.1
Arts, Entertainment & Recreation	4.8	4.6	4.4	0.2	0.4	4.3	9.1
Accommodation & Food Services	34.0	33.9	32.5	0.1	1.5	0.3	4.6
Other Services	10.1	10.1	10.2	0.0	-0.1	0.0	-1.0
Government	56.9	56.9	55.9	0.0	1.0	0.0	1.8
Federal	7.1	7.1	7.0	0.0	0.1	0.0	1.4
State	19.9	20.0	19.0	-0.1	0.9	-0.5	4.7
Local	29.9	29.8	29.9	0.1	0.0	0.3	0.0
Burlington-S. Burlington Metro (NECTA)	126.5	126.2	125.3	0.3	1.2	0.2	1.0
Total Nonfarm							

Source: Current Employment Statistics Program (CES) produced by the Economic and Labor Market Information Division, Vermont Department of Labor (www.vtلمي.info/ces.cfm) in cooperation with the U.S. Bureau of Labor Statistics (www.bls.gov/sae).

Estimates are preliminary and subject to revision. See Annual Summary for details.



Table 4. Vermont Nonfarm Payroll Employment, not seasonally adjusted

NAICS Industry	May-19	Apr-19	May-18	Change From:		% Change From:	
	Prelim	Revised	Revised	Apr-19	May-18	Apr-19	May-18
TOTAL NONFARM	314,100	314,300	311,300	-200	2,800	-0.1	0.9
TOTAL PRIVATE	257,100	255,500	254,800	1,600	2,300	0.6	0.9
GOODS-PRODUCING	45,900	44,100	46,100	1,800	-200	4.1	-0.4
MINING, LOGGING AND CONSTRUCTION	15,300	13,600	16,400	1,700	-1,100	12.5	-6.7
Mining & Logging	800	700	800	100	0	14.3	0.0
Construction	14,500	12,900	15,600	1,600	-1,100	12.4	-7.1
MANUFACTURING	30,600	30,500	29,700	100	900	0.3	3.0
Durable Goods	19,300	19,300	18,300	0	1,000	0.0	5.5
Non-Durable Goods	11,300	11,200	11,400	100	-100	0.9	-0.9
Food Mfg.	5,400	5,400	5,400	0	0	0.0	0.0
SERVICE-PROVIDING	268,200	270,200	265,200	-2,000	3,000	-0.7	1.1
TRADE, TRANSPORTATION AND UTILITIES	53,900	54,200	54,100	-300	-200	-0.6	-0.4
Wholesale Trade	9,000	9,100	9,100	-100	-100	-1.1	-1.1
Retail Trade	36,900	37,100	37,000	-200	-100	-0.5	-0.3
Food & Beverage Stores	9,900	9,800	9,600	100	300	1.0	3.1
General Merchandise Stores	3,100	3,200	3,200	-100	-100	-3.1	-3.1
Transportation, Warehousing & Utilities	8,000	8,000	8,000	0	0	0.0	0.0
Transportation & Warehousing	6,800	6,800	6,700	0	100	0.0	1.5
Utilities	1,200	1,200	1,300	0	-100	0.0	-7.7
INFORMATION	4,200	4,200	4,300	0	-100	0.0	-2.3
FINANCIAL ACTIVITIES	11,700	11,400	12,000	300	-300	2.6	-2.5
Finance & Insurance	8,700	8,600	9,000	100	-300	1.2	-3.3
Real Estate, Rental & Leasing	3,000	2,800	3,000	200	0	7.1	0.0
PROFESSIONAL AND BUSINESS SERVICES	29,700	29,100	29,100	600	600	2.1	2.1
Professional & Technical Services	14,900	14,700	14,600	200	300	1.4	2.1
Administrative & Waste Services	12,600	12,200	12,500	400	100	3.3	0.8
EDUCATION AND HEALTH SERVICES	66,900	67,300	65,700	-400	1,200	-0.6	1.8
Educational Services	13,200	13,600	13,500	-400	-300	-2.9	-2.2
Colleges and Universities	8,200	8,800	8,500	-600	-300	-6.8	-3.5
Health Care & Social Assistance	53,700	53,700	52,200	0	1,500	0.0	2.9
Ambulatory Health Care Services	18,100	18,200	17,400	-100	700	-0.5	4.0
Hospitals	14,900	14,900	14,300	0	600	0.0	4.2
Nursing & Residential Care Facilities	7,400	7,400	7,400	0	0	0.0	0.0
Social Assistance	13,300	13,200	13,100	100	200	0.8	1.5
LEISURE AND HOSPITALITY	34,800	35,200	33,300	-400	1,500	-1.1	4.5
Arts, Entertainment & Recreation	4,700	4,000	4,400	700	300	17.5	6.8
Accommodation & Food Services	30,100	31,200	28,900	-1,100	1,200	-3.5	4.2
Accommodation	8,500	10,600	9,000	-2,100	-500	-19.8	-5.6
Hotels & Motels	7,500	9,700	8,000	-2,200	-500	-22.7	-6.3
Food Services & Drinking Places	21,600	20,600	19,900	1,000	1,700	4.9	8.5
OTHER SERVICES	10,000	10,000	10,200	0	-200	0.0	-2.0
GOVERNMENT	57,000	58,800	56,500	-1,800	500	-3.1	0.9
Federal Government	7,100	7,100	7,000	0	100	0.0	1.4
State Government Education	8,800	11,500	8,400	-2,700	400	-23.5	4.8
Other State Government	9,900	9,600	9,600	300	300	3.1	3.1
Local Government Education	23,600	23,200	23,900	400	-300	1.7	-1.3
Other Local Government	7,600	7,400	7,600	200	0	2.7	0.0

Source: Current Employment Statistics Program (CES) produced by the Economic and Labor Market Information Division, Vermont Department of Labor (www.vtلمي.info/ces.cfm) in cooperation with the U.S. Bureau of Labor Statistics (www.bls.gov/sae).

Estimates are preliminary and subject to revision. See Annual Summary for details.

###

